

# Application Circuits for the Phototransistor Switch



## Application Bulletin 213

### General Description

Phototransistors circuits may be adjusted for a selected sensitivity range and often do not require additional amplification. They can be applied in two modes, Active or Switch mode.

**“Switch mode”**: means the phototransistor will either be “off” or “on” for a digital logic response to the object sensed.

**“Active mode”**: means the phototransistor generates an output response based on the light or irradiance level.  $I_C(\text{on})$  will be proportional to the coupled light intensity.

The examples in this bulletin apply to reflective and slotted OPB switches as well as Optek discrete IRLED and Phototransistor pairs, when also applied in object sensing applications. Circuits are designed for the “Switch Mode” and based on typical product performance and application conditions. Each application design should be evaluated for adjustments to these circuit values in order to optimize the performance of the optical sensor. Application variables will include: aperture size, reflective surfaces and blocking material, sensing distance, etc.

For “Active Mode” operation adjust the load resistance by decreasing the value of  $R_2$  based on application experiments. This value will typically be less than  $5K\Omega$ .

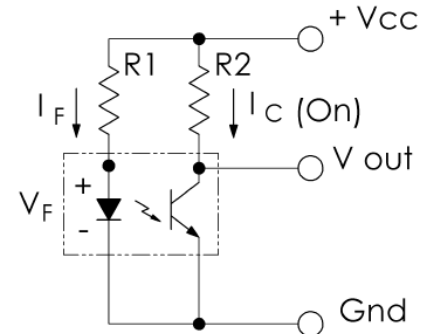
### Basic Interface Circuits for CMOS

The **common-emitter circuit** will generate an output signal which transitions from high to low high when the phototransistor detects light or infrared radiation. This is commonly referred to as an “inverting logic condition”.

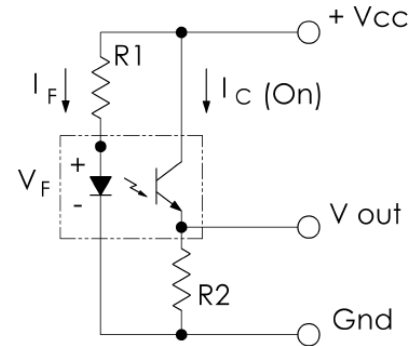
The **common-collector circuit** will generate an output signal which transitions from low to high when the phototransistor detects light or infrared radiation. This is commonly referred to as a “noninverting logic condition”. These two circuit examples are compatible with all CMOS logic in the 3.3V to 15V versions. Collector circuit current ( $I_C$ ) is limited to approximately 0.5mA. If optical signal levels are very low, increase the load resistance  $R_2$ .

### Conditions

For best compatibility with CMOS, a condition of phototransistor saturation is best. When fast switch response times are needed or direct TTL compatibility is required, consider the addition of a buffer as shown in figures 3 through 6.



**Figure 1: The common-emitter circuit**  
LED Off/Blocked = Output High



**Figure 2: The common-collector circuit**  
LED On/Unblocked = Output High

$$I_F = 20\text{mA}, V_F = 1.5\text{V} \text{ \& } V_{CE} = 0.3\text{V (typical)}$$

$$R1 = \frac{(V_{CC} - V_F)}{I_F}$$

$$R2 = \frac{V_{CC} - V_{CEsat}}{I_C(\text{on})}$$

### Example for $V_{CC} = 5\text{ volts}$

$$R1 = \frac{(5\text{V} - 1.5\text{V})}{20\text{mA}} \sim 180\Omega$$

$$R2 = \frac{(5\text{V} - 0.3\text{V})}{0.5\text{mA}} \sim 10K\Omega$$

### For $V_{CC} = 15\text{ volts}$

$$R1 \sim 675\Omega \text{ \& } R2 \sim 29K\Omega$$

### General Note

TT Electronics reserves the right to make changes in product specification without notice or liability. All information is subject to TT Electronics' own data and is considered accurate at time of going to print.

TT Electronics | Optek Technology  
1645 Wallace Drive, Suite 130, Carrollton, TX, USA 75006 | Ph: +1 972-323-2300  
www.ttelectronics.com | sensors@ttelectronics.com

# Application Title

## Application Bulletin #



### Interface Circuits for TTL or Hardware Drivers

The **transistor buffer** is a cost effective choice in single-sensor applications where logic buffers and gates may not be available packaged singly. More versatile, this circuit can provide optimum noise immunity, faster switching speeds, or directly drive low current mechanical relays if using a 2N2219 or equivalent for Q1. R3 can be 1K $\Omega$  to support 1.6mA TTL sink current. R4 will typically be about 50K $\Omega$ .

Complete saturation of the phototransistor is not necessary, however, adjustments to R2 may be required if sensor is too sensitive or affected by ambient light interference. Connect Vout direct to TTL, or R3 may be a substituted for a relay input.

### Conditions

The logic buffer (SN74S00 or equivalent) is a popular interface option and provides fast switching and good signal conditioning. Refer to Figure 4.

$I_F = 20\text{mA}$ , and  $V_F = 1.5\text{V}$  (typical)

$V_{CEsat} = 0.3\text{V}$  (typical)

### Example for $V_{CC} = 5\text{ volts}$

$$R1 = \frac{(5V - 1.5V)}{20\text{mA}} \sim 180\Omega$$

$$R2 \sim 5K \text{ to } 10K\Omega$$

$$R3 = 1K\Omega$$

$$R4 \sim 50K\Omega$$

Q1 is a PN2222A or 2N2219 type.

The schmitt trigger inverter (SN7414 or equal) provides hysteresis and helps to stabilize the

logic signal when sensing marginal photocurrent levels or slow mechanical transitions.

The **voltage comparator interface** (LM339, or equal) features a voltage reference that may be used to set a threshold level: R2 should be equal to  $V_{ref} / I_{C(on)}$ .

### Conclusion

Environmental effects, such as temperature and contamination, for example, must be taken into consideration when evaluating the circuit design. Also aging effects may account for up to 25 % reduction in LED efficiency when operated at these suggested levels. Please consult the Optek product specification for the applied product before choosing or finalizing a circuit design.

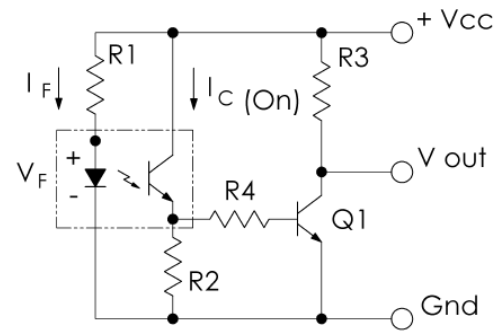


Figure 3: Adding a transistor buffer stage

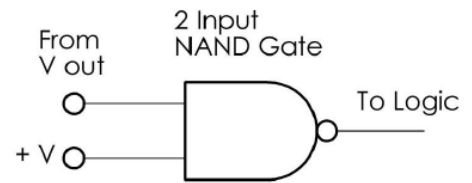


Figure 4: Adding a Buffer IC to Figure 1 or 2

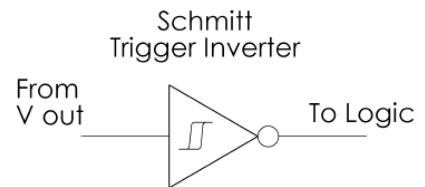


Figure 5: Adding a Schmitt Trigger Inverter IC to Figure 1 or 2

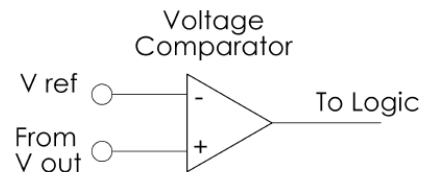


Figure 6: Adding a Voltage Comparator to Figure 2. Select  $R2 = V_{ref} / I_{C(on)}$

### General Note

TT Electronics reserves the right to make changes in product specification without notice or liability. All information is subject to TT Electronics' own data and is considered accurate at time of going to print.

TT Electronics | Optek Technology  
1645 Wallace Drive, Suite 130, Carrollton, TX, USA 75006 IPh: +1 972-323-2300  
www.ttelectronics.com | sensors@ttelectronics.com