

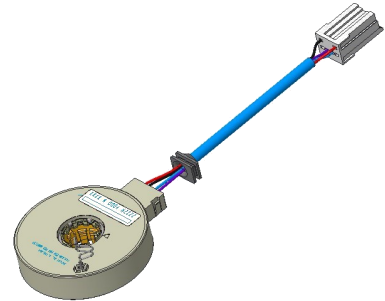
Lh3 Torque Sensor

SX-4505



Features:

- 8° torque signal sensing angle
- Ideally suited for demanding electric power steering systems
- Lead-free
- RoHS 2 compliant



Electrical Specifications

Torque signal linearity	±3%
Torque hysteresis	0.5%
Torque signal microgradient	±30% of theoretical slope over 0.4° interval
Torque signal sensing angle	±8°
Total resistance	800 Ω ±30%

Mechanical Specifications

Torque mechanical travel	±11.4°
Turning torque (rotor to rotor)	0.03 NM Max.
Turning torque (rotor to housing)	0.06 NM Max.
Weight	95 grams maximum

Environmental Specifications

Operating temperature range	-40°C to +85°C
Shock	14 ms half-sine at 300 m/s ²
Vibration	10 to 55 Hz with 1 mm P-P constant displacement; 120 hours each of 3 planes
Torque rotational life	1 million cycles
Storage temperature range	-40°C to +105°C

General Note

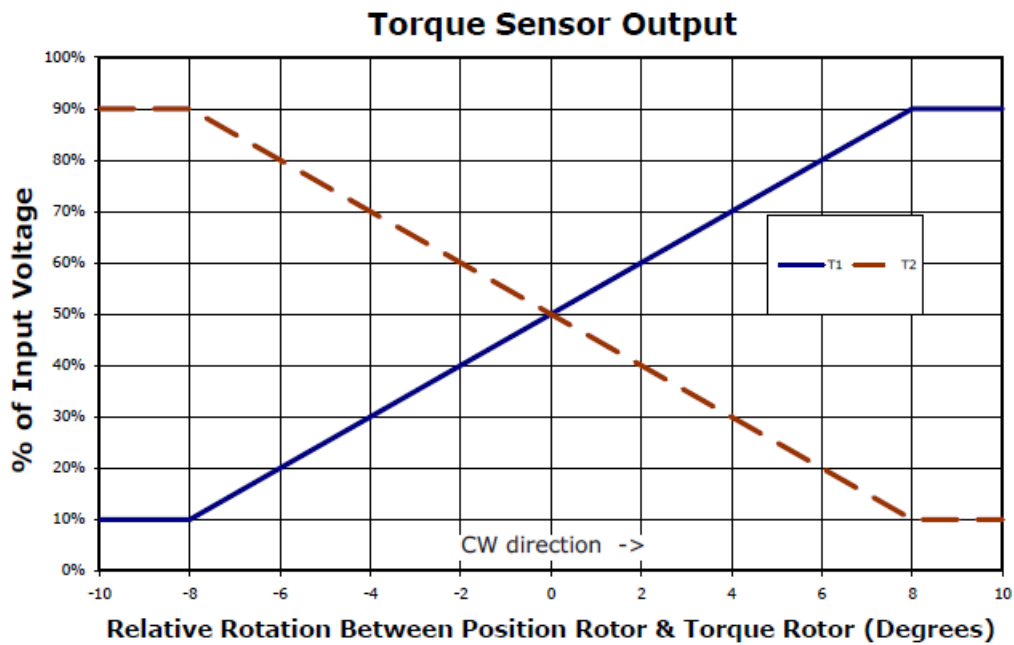
TT Electronics reserves the right to make changes in product specification without notice or liability. All information is subject to TT Electronics' own data and is considered accurate at time of going to print.

© TT electronics plc

TT Electronics | BI Technologies
413 Rood RD, Suite 7
Calexico, CA 92231

Ph: + 1 (714) 447-2345
Issue C: 04/2019
www.ttelectronics.com/bi-technologies

Output Chart



General Note

TT Electronics reserves the right to make changes in product specification without notice or liability. All information is subject to TT Electronics' own data and is considered accurate at time of going to print.

© TT electronics plc

TT Electronics | BI Technologies

413 Rood RD, Suite 7

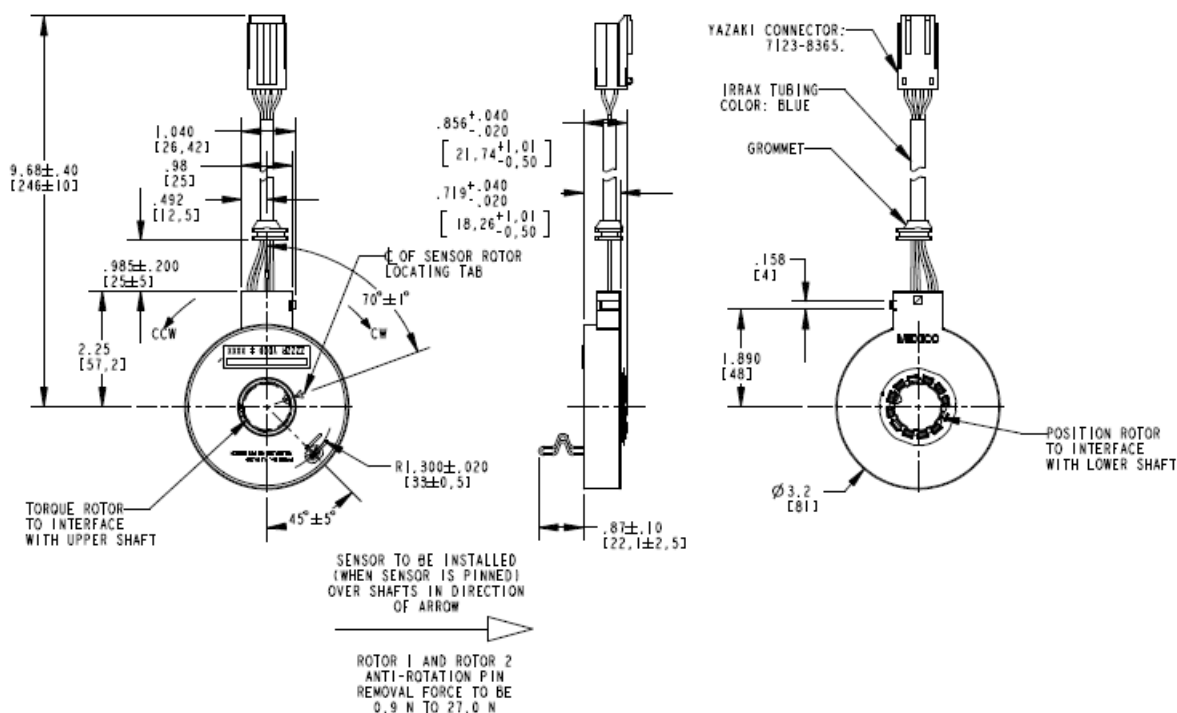
Calexico, CA 92231

Ph: + 1 (714) 447-2345

www.ttelectronics.com/bi-technologies

Issue C 04/2019 Page 2

Outline Drawing



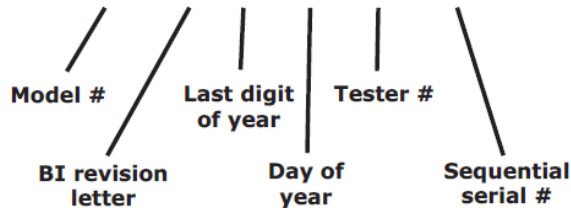
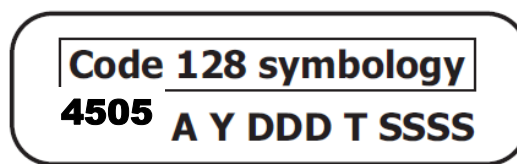
Pinouts

PIN OUTS-6 PIN CONNECTOR					
YAZAKI 7122-8365					
2					1
6	5	4	3		

(PIN No'S ARE INDICATED AS WIRES ENTER CONNECTOR END)

PIN No.	SIGNAL	WIRE COLOR
1	Vcc	RED
2	GND	BLACK
3	N/A	- - -
4	T1	BLUE
5	T2	PURPLE
6	N/A	- - -

Barcode Label



General Note

TT Electronics reserves the right to make changes in product specification without notice or liability. All information is subject to TT Electronics' own data and is considered accurate at time of going to print.

© TT electronics plc

TT Electronics | BI Technologies
413 Rood RD, Suite 7
Callexico, CA 92231

Ph: + 1 (714) 447-2345
www.ttelectronics.com/bi-technologies
Issue C 04/2019 Page 3