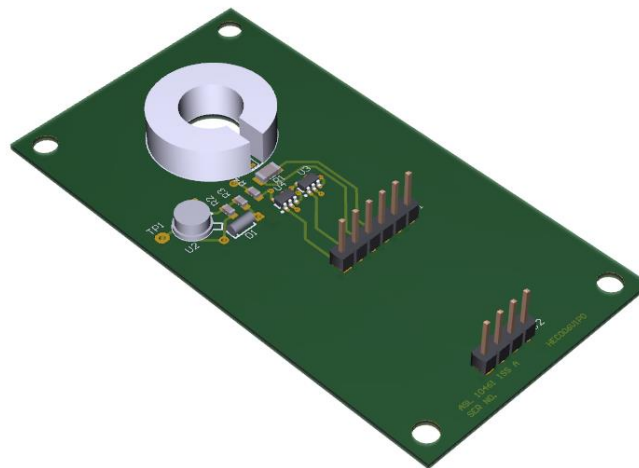


AS055

HEC006

- Buffered Hall Sensor, stable constant current drive
- Gapped core, dimensions to suit measurement range
- Measurement range 30A to 1200A
- Power supply 5Vref
- Bandwidth DC to 1MHz
- Temperature sensor for thermal compensation of scaling
- Temperature, ambient range -55 to 125°C
- Note that the Hall sensor and core can operate between -100 and 180°C if extended operation is a requirement. This would be a special customisation.
- PCB dimensions 82x44mm. Height depends on core and connector requirements



- Cores can be designed to suit different conductors. For example, this is a 1000A core for a rectangular bus bar.

